

# Create your own Cottage Garden



EUROBODALLA  
REGIONAL  
BOTANIC  
GARDEN

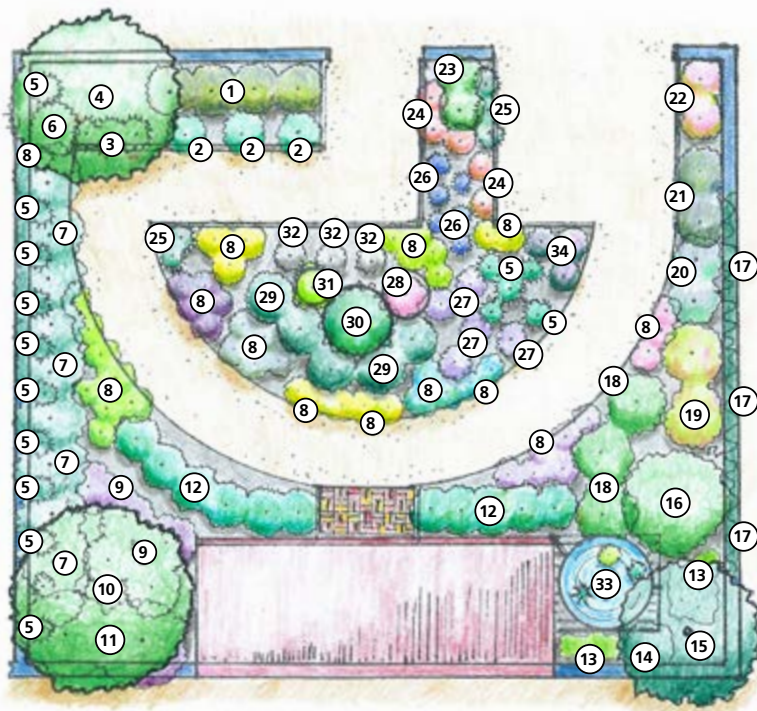
## Naturescape hint

Don't rely on just flowers to provide your garden with year-round colour. Instead, choose plants with different leaf shades, textures and shapes.

### What is a Cottage Garden?

To create an informal, picturesque garden with local plants is easy, and there is sure to be something flowering at most times of the year. This style of garden produces so much nectar and pollen that it will be irresistible to birds and insects.

Plants suitable for this style of garden are typically short-lived. They will self-seed or can be easily divided so you have a constant source of new plants to keep or give away.



### Cottage Garden plant list

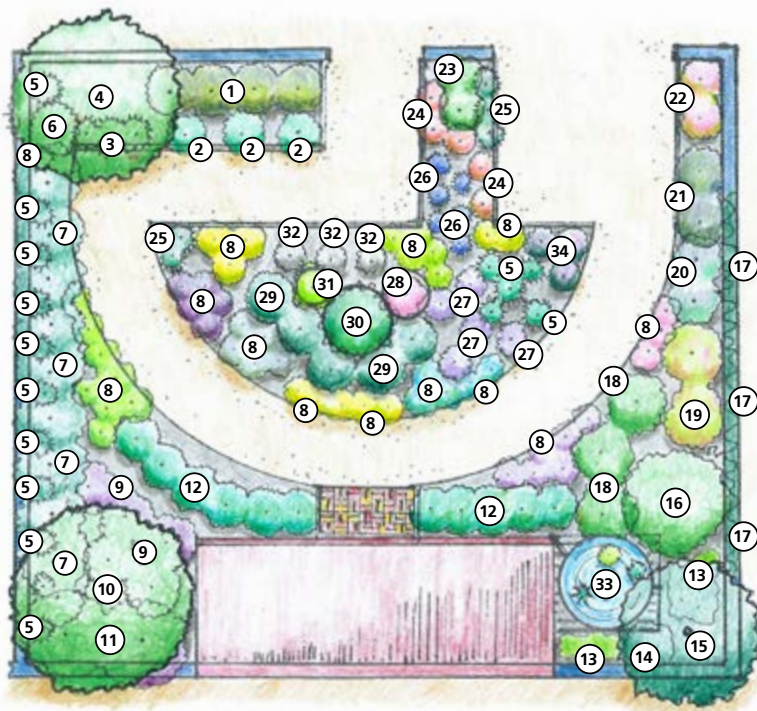
1. Myrtle Tea-tree *Leptospermum myrtifolium*
2. Derwent Speedwell *Veronica derwentiana*
3. Grass Flag *Libertia paniculatum*
4. Honey Myrtle *Melaleuca hypericifolia*
5. Flax Lily *Dianella* sp.
6. Forest Phebalium *Phebalium squamulosum*
7. Yellow Pittosporum *Pittosporum revolutum*
8. Assorted daisy groupings including *Actinotus*, *Xerochrysum*, *Brachyscome* and *Coronidium* sp.
9. Violet Mint-bush *Prostanthera violacea*
10. Blueberry Ash *Elaeocarpus reticulatus*
11. Kerrawang *Commersonia dasyphylla*
12. Digger's Speedwell *Veronica perfoliata*
13. Native Violet *Viola hederacea*
14. Velvet Mint-bush *Prostanthera incana*
15. Christmas Bush *Prostanthera lasianthos*
16. Heath Leafed Banksia *Banksia ericifolia*
17. Wonga Wonga Vine *Pandorea pandorana*
18. Round-Leaved Tea-tree *Leptospermum rotundifolium*
19. Native Indigo *Indigofera australis*
20. Bush Basil *Plectranthus graveolens*
21. Woolly Tea-tree *Leptospermum lanigerum*
22. Violet Kunzea *Kunzea parvifolia*

*Continued over page.*

# Create your own Cottage Garden



EUROBODALLA  
REGIONAL  
BOTANIC  
GARDEN



## Cottage Garden plant list *continued*

23. Long-leaf Waxflower *Philothea myoporoides*
24. Crowea *Crowea exalata*
25. Fine-leaved Snow Grass *Poa meionectes*
26. Purple Flag *Patersonia sericea*
27. Velvet Hovea *Hovea purpurea*
28. Thyme Pink Bells *Tetratheca thymifolia*
29. Fringe Myrtle *Calytrix tetragona*
30. Hairpin Banksia *Banksia spinulosa*
31. Slender Rice Flower *Pimelea linifolia*
32. Dwarf Zieria *Zieria littoralis*
33. Aquatic plants including *Myriophyllum sp.* and *Lythrum salicaria*
34. Mountain Mint Bush *Prostanthera saxicola var. montana*