

Create your own Wildlife Garden



EUROBODALLA
REGIONAL
BOTANIC
GARDEN

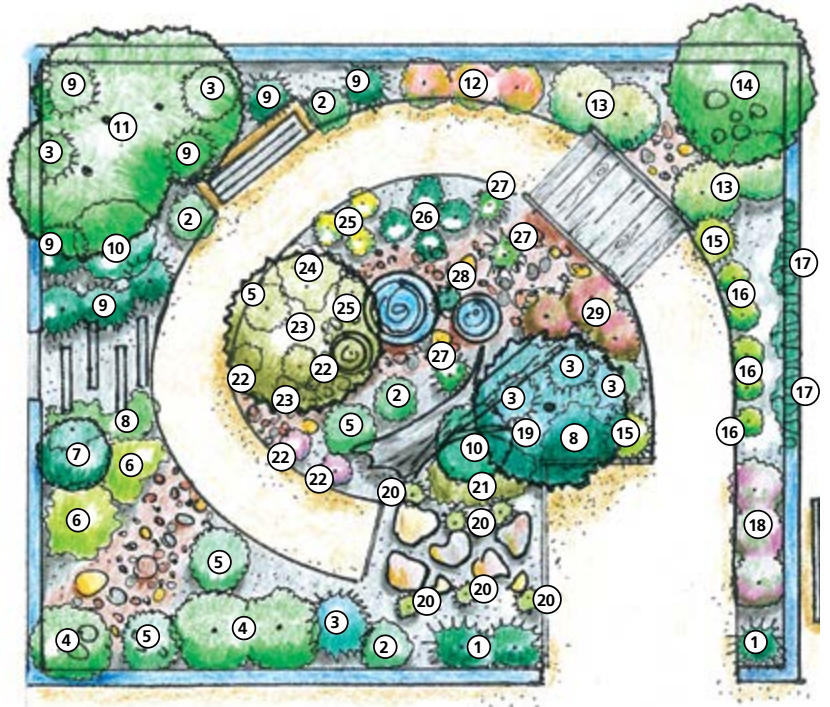
Naturescape hint

Don't remove logs from the bush; instead use branches from your garden or contact your local arborist who may provide branch trimmings.

What is a Wildlife Garden?

A garden replicating some of the natural conditions found in the bush encourages insects, birds, and small mammals to seek food and nesting sites among the trees and shrubs.

Logs, rocks, and mulch not only create safe places for insects and lizards but also help establish favourable soil conditions for underground creatures. By adding a reliable water source to your garden, you will encourage frogs and provide a consistent place for your wildlife to drink and bathe.



Wildlife Garden plant list

1. Matt Rush *Lomandra longifolia*
2. Woolly Grevillea *Grevillea lanigera*
3. Common Tussock-Grass *Poa labillardieri*
4. White Kunzea *Kunzea ambigua*
5. Deua Flame *Grevillea rhyolitica*
6. Hop Goodenia *Goodenia ovata prostrate*
7. *Melaleuca capitata*
8. Native Sarsparilla *Hardenbergia violacea*
9. Tasman Flax Lily *Dianella tasmanica*
10. Dwarf Bottlebrush *Callistemon subulatu*
11. Black She-oak *Allocasuarina littoralis*
12. Common Correa *Correa reflexa*
13. Hairpin Banksia *Banksia spinulosa*
14. Willow-leaved Hakea *Hakea salicifolia*
15. Kangaroo Grass *Themeda australis*
16. Paper Daisy *Xerochrysum bracteatum*
17. Apple Berry *Billardiera scandens*
18. Thyme Honey-myrtle *Melaleuca thymifolia*
19. Baeuerlen's Gum *Eucalyptus baeuerlenii*
20. Snow Grass *Poa meionectes*
21. Wrinkled Kerrawang *Commersonia hermannifolia*
22. Purple Loosestrife *Lythrum salicaria*
23. Saw Banksia *Banksia serrata*
24. Rock Daisy *Brachyscome angustifolia*
25. Prostrate Guinea Flower *Hibbertia diffusa*
26. Thyme Pink Bells *Tetradlea thymifolia*
27. Knobby Club-rush *Ficinia nodosa*
28. Tassell Rope-rush *Baloskion tetraphyllum*
29. Violet Kunzea *Kunzea parvifolia*